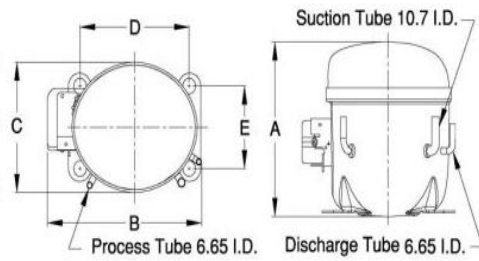


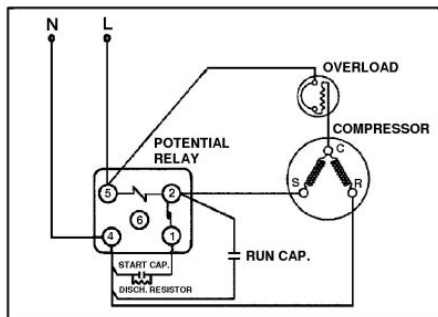


PRINCIPAL DIMENSIONS - mm



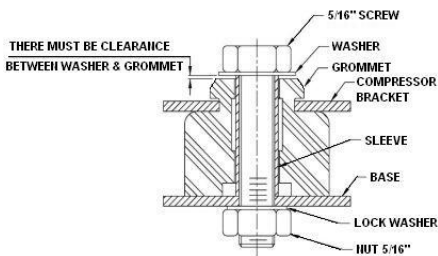
A: 215	B: 233	C: 160	D: 165	E: 102
--------	--------	--------	--------	--------

SCHEMATIC WIRING DIAGRAM C.S.R.



SCHEMATIC WIRING DIAGRAM -

MOUNTING KIT



Electrical : 220/240 V/50 Hz. 1 Phase

Nominal Performance

Capacity	1,000 / 1,830 Watts
	3,412 / 6,244 BTU/Hr
	860 / 1,574 Kcal/Hr
Power Input	588 / 796 Watts
Locked Rotor Amps	16.00 / 16.00 Amps
Max Continuous Current	- / - Amps
Rated Load Amps	2.90 / 3.90 Amps
COP	1.70 / 2.30 Watts / Watts
EER	5.80 / 7.84 BTU/W-Hr

Testing Conditions

Condensing Temperature	54.40 °C	129.9 °F
Evaporating Temperature	-6.70 / 7.20 °C	19.9 / 45.0 °F
Liquid Temperature	46.10 °C	115.0 °F
Return Gas Temperature	35.00 °C	95.0 °F
Ambient Temperature	35.00 °C	95.0 °F

Application

Evaporating Temp. Range	MBP/HBP	@ -23.30 °C to 12.70 °C (-9.9° F to 54.9° F)
	Heat Pump	- °C to - °C (-° F to -° F)
Refrigerant	R134a	
Refrigerant Flow Control	Capillary tube/Expansion valve	
Compressor Cooling	Fan (460 CFM)	

Compressor and Motor data

Compressor Type	Reciprocating
Displacement	20.00 cc.
Oil Type	Polyolester Oil
Oil Charge	417 cc.
Motor Type	C.S.R. ; 2 Pole 2,850 / 2,850 r/m
Voltage Range	187-264/- Volts 50/- Hz.
Winding Resistance at 25 °C	
Start	8.57 Ohms
Run	3.82 Ohms
Weight with Oil	12.97 Kg.
Weight with Oil and Accessories	13.62 Kg.

Electrical Components

Motor Protector	
Type	External 3/4"
Model Number	KME664-25/C
Open / Close	100-110 / 70-52 °C
1st Cycle trip at 25 °C	20.40 Amps(main) - Amps(start)

Motor Starter	
Type	Potential Relay
Model Number	4043KME692-1 (RVA8R6D)
Pick Up (max.)	323.00-352.00 Volts
Drop Out (min.)	75.00-180.00 Volts
Terminal Cover	KMD 901-12
Start Capacitor	43-52 µF 330 VAC.
Disch Resistor for Start Cap	15000 Ohms 2 W
Run Capacitor	10 µF 440 VAC.

Mounting Kit

Rubber Grommet	4007KGM905-2
Sleeve Grommet	3KGM903-Z
Washer	4023KEB387

Since we are constantly improving our product , the specification are subject to change without notice.

REV. DATE	C / N No.
27-10-16	0454/16

Certificate Marks



COMPRESSOR PERFORMANCE TABLE