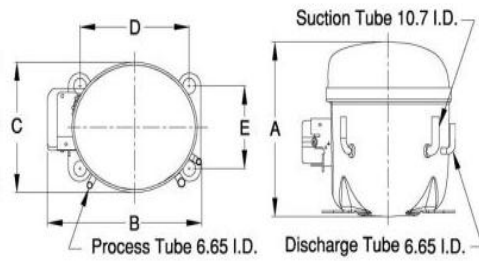


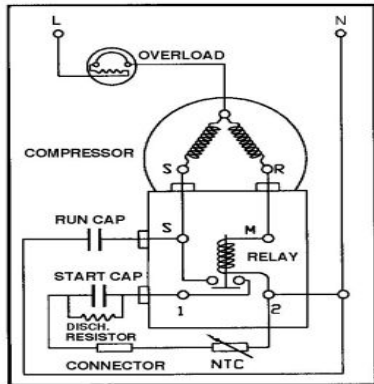


**PRINCIPAL DIMENSIONS - mm**



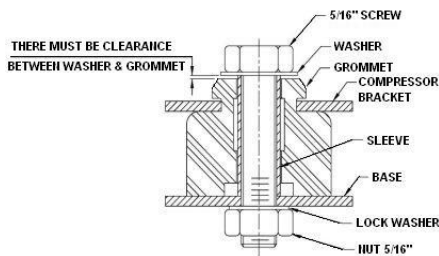
A: 215	B: 233	C: 160	D: 165	E: 102
--------	--------	--------	--------	--------

**SCHEMATIC WIRING DIAGRAM C.S.R.**



**SCHEMATIC WIRING DIAGRAM -**

**MOUNTING KIT**



Electrical : 220-240 V/50 Hz. 1 Phase

**Nominal Performance**

Capacity	920 / 1,680 Watts
	3,139 / 5,732 BTU/Hr
	791 / 1,445 Kcal/Hr
Power Input	510 / 700 Watts
Locked Rotor Amps	16.00 / 16.00 Amps
Max Continuous Current	- / - Amps
Rated Load Amps	2.50 / 3.30 Amps
COP	1.80 / 2.40 Watts / Watts
EER	6.15 / 8.19 BTU/W-Hr

**Testing Conditions**

Condensing Temperature	54.40 °C	129.9 °F
Evaporating Temperature	-6.70 / 7.20 °C	19.9 / 45.0 °F
Liquid Temperature	46.10 °C	115.0 °F
Return Gas Temperature	35.00 °C	95.0 °F
Ambient Temperature	35.00 °C	95.0 °F

**Application**

Evaporating Temp. Range	MBP/HBP	@ -23.30 °C to 12.70 °C (-9.9° F to 54.9° F)
	Heat Pump	- °C to - °C (-° F to -° F)
Refrigerant	R134a	
Refrigerant Flow Control	Capillary Tube	
Compressor Cooling	Fan (460 CFM)	

**Compressor and Motor data**

Compressor Type	Reciprocating
Displacement	18.00 cc.
Oil Type	Polyolester Oil
Oil Charge	417 cc.
Motor Type	C.S.R. ; 2 Pole 2,850 / 2,850 r/m
Voltage Range	187-264/- Volts 50/- Hz.
Winding Resistance at 25 °C	
Start	9.18 Ohms
Run	3.97 Ohms
Weight with Oil	12.95 Kg.
Weight with Oil and Accessories	13.20 Kg.

**Electrical Components**

<b>Motor Protector</b>	
Type	External 3/4"
Model Number	KME664-10/C
Open / Close	115-125 / 78-60 °C
1st Cycle trip at 25 °C	15.20 Amps(main) - Amps(start)

<b>Motor Starter</b>	
Type	Current Relay
Model Number	KME682-23NT
Pick Up (max.)	10.30 Amps
Drop Out (min.)	9.60 Amps
Terminal Cover	KMD 901-12
Start Capacitor	36-43 µF 330 VAC.
Disch Resistor for Start Cap	15000 Ohms 2 W
Run Capacitor	10 µF 440 VAC.

**Mounting Kit**

Rubber Grommet	4007KGM905
Sleeve Grommet	3KGM903-Z
Washer	4023KEB387

Since we are constantly improving our product , the specification are subject to change without notice.

REV. DATE	C / N No.
25-04-15	0177/15

**Certificate Marks**



**RoHS**