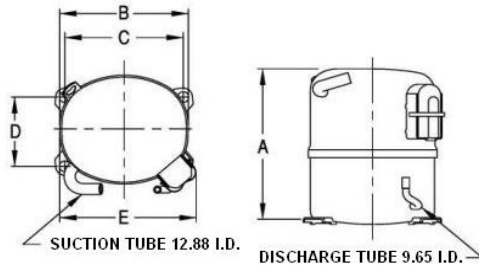


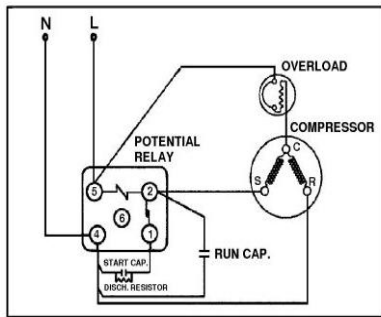


PRINCIPAL DIMENSIONS - mm



A: 264	B: 223	C: 203	D: 112	E: 239
--------	--------	--------	--------	--------

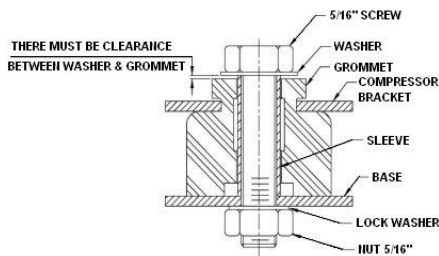
SCHEMATIC WIRING DIAGRAM C.S.R.



High Torque Start

SCHEMATIC WIRING DIAGRAM -

MOUNTING KIT



Electrical : 220-240 V/50 Hz. 1 Phase

Nominal Performance

Capacity	2,140 / - Watts
	7,302 / - BTU/Hr
	1,840 / - Kcal/Hr
Power Input	1,246 / - Watts
Locked Rotor Amps	38.00 / - Amps
Max Continuous Current	- / - Amps
Rated Load Amps	5.66 / - Amps
COP	1.72 / - Watts / Watts
EER	5.86 / - BTU/W-Hr

Testing Conditions

Condensing Temperature	54.40 °C	129.9 °F
Evaporating Temperature	-6.70 / - °C	19.9 / - °F
Liquid Temperature	46.10 °C	115.0 °F
Return Gas Temperature	35.00 °C	95.0 °F
Ambient Temperature	35.00 °C	95.0 °F

Application

Evaporating Temp. Range	CBP	@ -23.30 °C to 12.70 °C (-9.9° F to 54.9° F)
	Heat Pump	- °C to - °C (-° F to -° F)
Refrigerant	R22	
Refrigerant Flow Control	Capillary tube/Expansion valve	
Compressor Cooling	Fan	

Compressor and Motor data

Compressor Type	Reciprocating
Displacement	26.70 cc.
Oil Type	Mineral Oil
Oil Charge	850 cc.
Motor Type	C.S.R. ; 2 Pole 2,850 / - r/m
Voltage Range	198-264/- Volts 50/- Hz.
Winding Resistance at 25 °C	
Start	4.90 Ohms
Run	2.04 Ohms
Weight with Oil	22.20 Kg.
Weight with Oil and Accessories	23.30 Kg.

Electrical Components

Motor Protector	
Type	External Overload 3/4"
Model Number	KME664-17/C
Open / Close	140-150 / 70-52 °C
1st Cycle trip at 25 °C	28.50 Amps(main) - Amps(start)
Motor Starter	
Type	Potential Relay
Model Number	4043KGE681-3 (RVA3H6D)
Pick Up (max.)	190.00-215.00 Volts
Drop Out (min.)	40.00-105.00 Volts
Terminal Cover	KGM 901-1
Start Capacitor	145-174 µF 330 VAC.
Disch Resistor for Start Cap	15000 Ohms 2 W
Run Capacitor	25 µF 450 VAC.

Mounting Kit

Rubber Grommet	4007KGM905-2
Sleeve Grommet	4023KGM903-2
Washer	-

Since we are constantly improving our product , the specification are subject to change without notice.

REV. DATE	C / N No.
13-10-17	0394/17

Certificate Marks



COMPRESSOR PERFORMANCE TABLE