

Model

Designation	SC18CLX.2	220-240V/50Hz 1~	Sales code:	104L2173
-------------	------------------	------------------	-------------	-----------------

Compressor design

Oil type	Polyolester	Refrigerant(s)	R404A, R452A, R507
Oil viscosity	32cST	Displacement	17,69cm ³ / 1,08cu.in
Oil quantity	550cm ³ / 18,6fl.oz	Compressors on pallet	80
Refr. charge - tech. limit	1300g / 45,9oz		
Free gas volume comp.	1460cm ³ / 49,4fl.oz		
Weight	13,8kg / 30,4lbs		
Motor protection	1# internal		
Winding resistance main	3,3Ω (at 25°C)		
Winding resistance aux	16,5Ω (at 25°C)		
Max. winding temp.	125°C / 257°F		
Max. discharge temp.	130°C / 266°F		



General - Configurations with SC18CLX.2

	Conf. 1	Conf. 2
Motorconfiguration	CSIR	CSIR
Power supply (nominal)	220-240V/50Hz	220-240V/50Hz
Number of phases	1	1
Voltage range	198-254V	198-254V
Approvals	VDE, CCC, EAC	VDE, CCC, EAC
Starting torque	HST	HST
Note	Protector and cover are included and pre-assembled to compressor.	

Applications with SC18CLX.2

	Conf. 1	Conf. 2
Refrigerant	R404A	R452A
Application	LBP	LBP
System cooling	fan 3m/s	fan 3m/s
Hot gas defrost	OK	OK
Long interval pull down	OK	OK

Electrical data - Configurations with SC18CLX.2

	Conf. 1	Conf. 2
Starting device type	relay	relay
Run capacitor	-/-	-/-
Start capacitor	125μF	125μF
LRA (locked rotor amps / 4s)	23,5A	23,5A
RLA (rated load amps / 1s)	4,5A	4,5A
Cut in current	23,5A	23,5A
IP class	21	21

Model

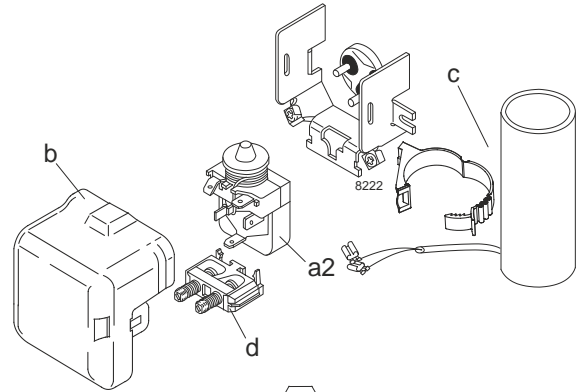
Designation	SC18CLX.2	220-240V/50Hz	Conf. 1	Sales code:	104L2173
-------------	------------------	----------------------	----------------	-------------	-----------------

Configuration

Motorconfiguration	CSIR
Power supply (nominal)	220-240V/50Hz 1~
Refrigerant	R404A
Application	LBP
Voltage range	198-254V
Starting torque	HST
Approvals	VDE CCC EAC

Electrical accessories / wiring diagram

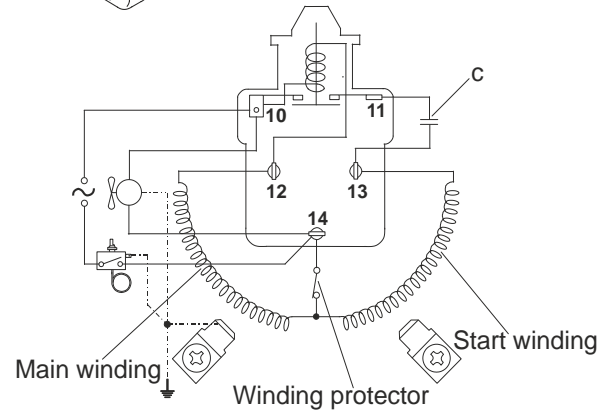
CSIR



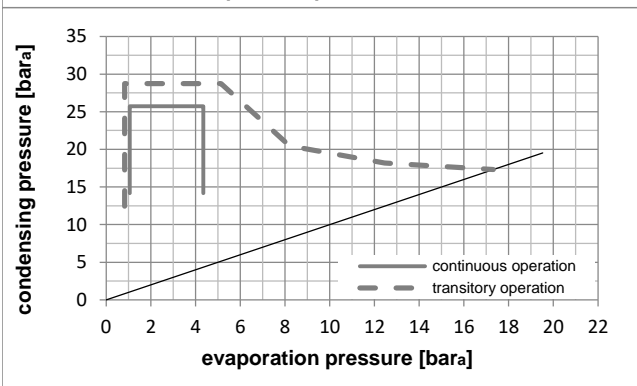
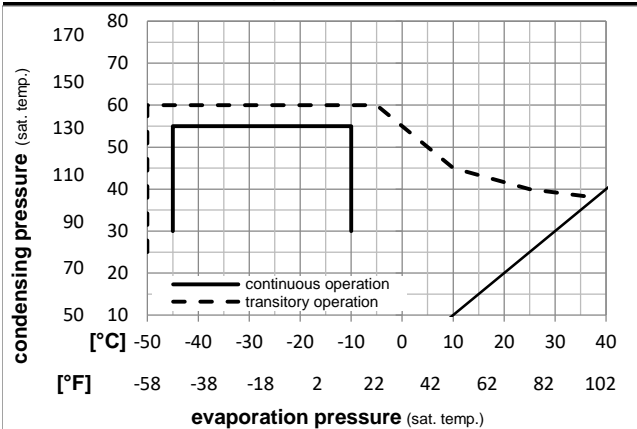
Ambient temperatures / system cooling

Ambient temperature min.:	10°C / 50°F
Ambient temperature max.:	38°C / 101°F

System cooling (n/a: outside limits)			
T ambient	LBP	MBP	HBP
32°C / 90°F	fan 3m/s	n/a	n/a
38°C / 100°F	fan 3m/s	n/a	n/a
43°C / 110°F	n/a	n/a	n/a



Operation pressure range



Components (protector + ~holder + cover: pre assembled)

a2	relay	117U6013
c	start capacitor (125µF)	117U5012
d	cord relief	103N1004
b	plastic cover	103N2009

Model

Designation **SC18CLX.2 220-240V/50Hz** Conf. 1 Sales code: **104L2173**

Optimization + standard conditions

R404A, 220V/50Hz, CSIR, fan 3m/s, VDE, CCC, EAC

Evaporating pressure (saturation temperature)		Condensing pressure (saturation temperature)				Cooling capacity			COP	EER	Power consumption			ASHRAE LBP
		Return gas temp.		Liquid temp.						Current consumption		Ref. mass flow		
pe	pc	RGT	Tliq	[W]	[Btu/h]	[kcal/h]	[W/W]	[Btu/Wh]	[kcal/Wh]	P1	I	m		
[°C]	[°C]	[°C]	[°C]	[W]	[Btu/h]	[kcal/h]	[W/W]	[Btu/Wh]	[kcal/Wh]	[W]	[A]	[kg/h]		
-23,3	54,4	32,2	32,2	884,0	3019	760,8	1,20	4,09	1,03	738,5	4,46	20,60	ASHRAE LBP	
-10	130	90	90											
-25	55	32	55	595,0	2032	512,1	0,84	2,87	0,72	708,4	4,34	18,60	cecomaf LBP	
-13	131	89,6	131											
-35	40	20	40	480,2	1640	413,3	0,93	3,19	0,80	514,4	3,68	13,05	EN12900 LBP	
-31	104	68	104											
-23,3	48,9	4,44	48,9	667,9	2281	574,8	0,93	3,17	0,80	720,0	4,42	23,65	ARI540 LBP	
-10	120	40	120											
-23,3	40,6	32,2	32,2	1021,9	3490	879,5	1,47	5,03	1,27	694,5	4,34	23,81	AHAM LBP	
-10	105	90	90											
-35	45	32	45	438,6	1498	377,5	0,85	2,90	0,73	517,2	3,68	11,73	opt	
-31	113	89,6	113											

Performance tables

R404A, 220V/50Hz, CSIR, fan 3m/s, VDE, CCC, EAC

[°C / °F]	pe	Cooling capacity			COP	EER	P1			I	m
	[°C]	[°F]	[W]	[Btu/h]	[kcal/h]	[W/W]	[Btu/Wh]	[kcal/Wh]	[W]	[A]	[kg/h]
-45	-49	194,5	664	167,4	0,55	1,88	0,47	354,1	3,13	5,17	
cond. pressure	-35	-31	438,6	1498	377,5	0,85	2,90	0,73	517,2	3,68	11,73
pc= 45/113	-30	-22	595,4	2033	512,4	1,00	3,40	0,86	597,7	3,98	15,98
return gas temp.	-25	-13	779,8	2663	671,1	1,15	3,92	0,99	679,7	4,28	21,03
RGT= 32/90	-20	-4	995,1	3399	856,4	1,30	4,44	1,12	764,6	4,60	27,00
liquid temp	-15	5	1244,8	4251	1071,2	1,46	4,98	1,25	854,0	4,92	34,00
Tliq= 45/113	-10	14	1532,0	5232	1318,4	1,61	5,51	1,39	949,3	5,26	42,19
-45	-49	93,2	318	80,2	0,29	0,99	0,25	320,5	3,01	2,86	
cond. pressure	-35	-31	304,7	1041	262,2	0,59	2,01	0,51	517,6	3,65	9,43
pc= 55/131	-30	-22	438,4	1497	377,3	0,72	2,44	0,62	613,0	3,99	13,62
return gas temp	-25	-13	595,0	2032	512,1	0,84	2,87	0,72	708,4	4,34	18,60
RGT= 32/90	-20	-4	778,0	2657	669,6	0,97	3,30	0,83	805,1	4,70	24,48
liquid temp	-15	5	990,8	3384	852,7	1,10	3,74	0,94	904,8	5,07	31,42
Tliq= 55/131	-10	14	1236,5	4223	1064,1	1,23	4,19	1,05	1009,0	5,45	39,58

Model

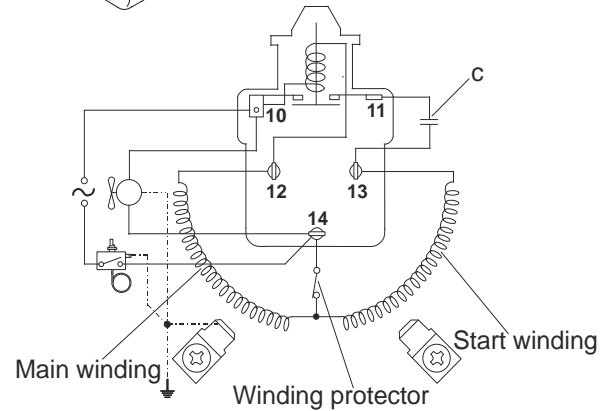
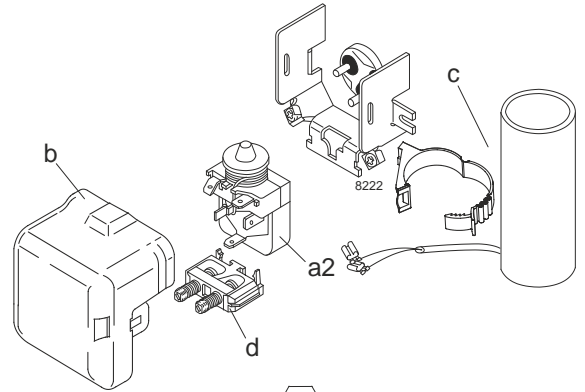
Designation	SC18CLX.2	220-240V/50Hz	Conf. 2	Sales code:	104L2173
-------------	------------------	----------------------	----------------	-------------	-----------------

Configuration

Motorconfiguration	CSIR
Power supply (nominal)	220-240V/50Hz 1~
Refrigerant	R452A
Application	LBP
Voltage range	198-254V
Starting torque	HST
Approvals	VDE CCC EAC

Electrical accessories / wiring diagram

CSIR

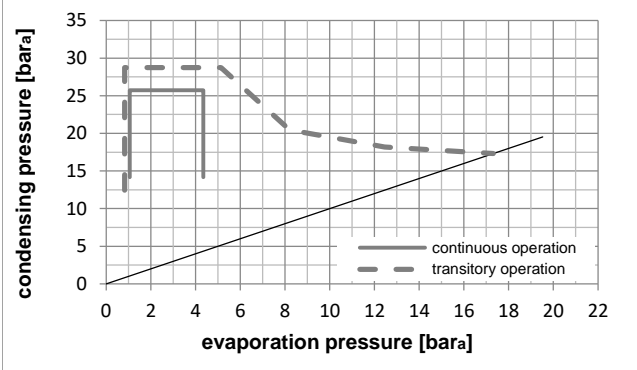
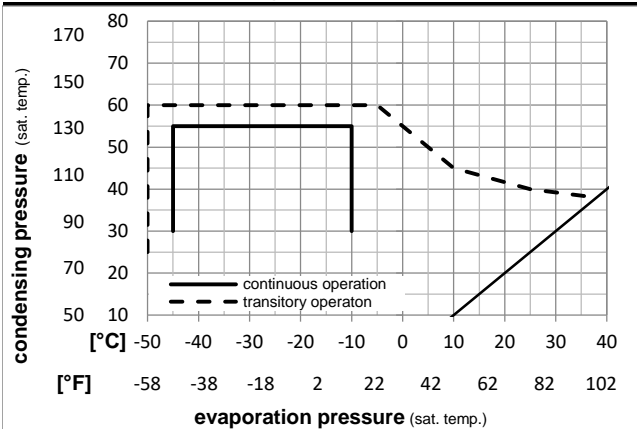


Ambient temperatures / system cooling

Ambient temperature min.:	10°C / 50°F
Ambient temperature max.:	38°C / 101°F

System cooling (n/a: outside limits)			
T ambient	LBP	MBP	HBP
32°C / 90°F	fan 3m/s	n/a	n/a
38°C / 100°F	fan 3m/s	n/a	n/a
43°C / 110°F	n/a	n/a	n/a

Operation pressure range



Components (protector + ~holder + cover: pre assembled)

a2	relay	117U6013
c	start capacitor (125µF)	117U5012
d	cord relief	103N1004
b	plastic cover	103N2009

Model

Designation **SC18CLX.2 220-240V/50Hz** Conf. 2 Sales code: **104L2173**

Optimization + standard conditions

R452A, 220V/50Hz, CSIR, fan 3m/s, VDE, CCC, EAC

Evaporating pressure (saturation temperature)		Condensing pressure (saturation temperature)				Cooling capacity						Power consumption			Ref. mass flow m	
		Return gas temp.						COP		EER		P1	I			
		Liquid temp.				[W]	[Btu/h]	[kcal/h]	[W/W]	[Btu/Wh]	[kcal/Wh]	[W]	[A]	[kg/h]		
pe	pc	RGT	Tliq													
[°C]	-23	54,4	32,2	32,2	808,1	2760	695,5	1,18	4,02	1,01	685,7	4,27	19,42	ASHRAE LBP		
[°F]	-10	130	90	90												
[°C]	-25	55	32	55	548,3	1873	471,9	0,84	2,86	0,72	655,4	4,16	17,45	cecomaf LBP		
[°F]	-13	131	89,6	131												
[°C]	-35	40	20	40	432,8	1478	372,4	0,92	3,13	0,79	472,0	3,52	12,08	EN12900 LBP		
[°F]	-31	104	68	104												
[°C]	-23	48,9	4,44	48,9	620,4	2119	533,9	0,93	3,16	0,80	670,4	4,22	22,30	ARI540 LBP		
[°F]	-10	120	40	120												
[°C]	-23	40,6	32,2	32,2	940,6	3212	809,5	1,45	4,96	1,25	648,2	4,14	22,61	AHAM LBP		
[°F]	-10	105	90	90												
[°C]	-35	45	32	45	393,9	1345	339,0	0,83	2,85	0,72	472,7	3,52	10,81	opt		
[°F]	-31	113	89,6	113												

Performance tables

R452A, 220V/50Hz, CSIR, fan 3m/s, VDE, CCC, EAC

	pe		Cooling capacity			COP		EER		P1	I	m
	[°C]	[°F]	[W]	[Btu/h]	[kcal/h]	[W/W]	[Btu/Wh]	[kcal/Wh]	[W]	[A]	[kg/h]	
[°C / °F]	-45	-49	164,5	562	141,6	0,52	1,78	0,45	315,4	2,97	4,49	
cond. pressure	-35	-31	393,9	1345	339,0	0,83	2,85	0,72	472,7	3,52	10,81	
pc= 45/113	-30	-22	542,4	1852	466,8	0,98	3,36	0,85	551,5	3,80	14,94	
return gas temp.	-25	-13	718,2	2453	618,1	1,14	3,88	0,98	632,2	4,08	19,87	
RGT= 32/90	-20	-4	924,8	3158	795,9	1,29	4,41	1,11	716,1	4,38	25,72	
liquid temp	-15	5	1165,9	3982	1003,4	1,45	4,95	1,25	804,7	4,69	32,61	
Tliq= 45/113	-10	14	1444,9	4935	1243,5	1,61	5,49	1,38	899,2	5,02	40,71	
[°C / °F]	-45	-49	72,5	248	62,4	0,26	0,90	0,23	276,4	2,84	2,27	
cond. pressure	-35	-31	271,4	927	233,6	0,58	1,98	0,50	467,7	3,51	8,56	
pc= 55/131	-30	-22	398,3	1360	342,8	0,71	2,42	0,61	561,3	3,83	12,61	
return gas temp	-25	-13	548,3	1873	471,9	0,84	2,86	0,72	655,4	4,16	17,45	
RGT= 32/90	-20	-4	724,9	2476	623,9	0,96	3,29	0,83	751,4	4,50	23,20	
liquid temp	-15	5	931,7	3182	801,8	1,10	3,74	0,94	850,7	4,85	30,03	
Tliq= 55/131	-10	14	1172,2	4003	1008,8	1,23	4,19	1,06	954,5	5,21	38,10	