



Compressor
Voltage Code : GS

THG1365YGS

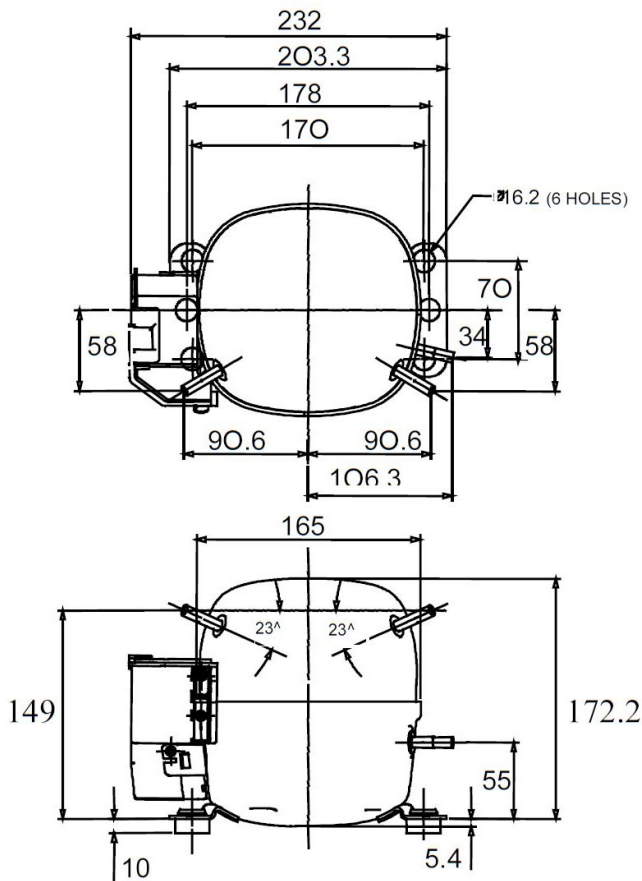
Domestic Refrigeration (BPM)

220V 1~ 50 Hz / 60 Hz

R134a

THG1365YGS

Conditions	Frequency	Nominal Cooling Capacity		Sound Power ISO3745 / ISO 3743-1
		Watts	BTU/h	
EN12900 / R134a	50 Hz / 60 Hz	121 / 137	413 / 467	



Displacement (cc)	5,9
Net Weight (Kg)	7.8
Oil Quantity (cc)	243.0
Oil Type	Polyolester
Expansion Device	Capillary_Tube
Cooling	Static
Main Winding (Ohm)	10.13
Start Winding (Ohm)	30.56
Current	
LRA (A)	12.2
Electrical Equipment	RSIR
Overload	4TM232VHBY
Time Check	5.0s - 15s / 8 A
Open Temp	150° C
Close Temp	69° C
Optional	T90026
Current Relay	RP38**
Pick Up	4.8A
Drop Out	4.10A
Refrigerating connection for OD	
Suction Tube	6.35 (1/4")
Discharge Tube	6.35 (1/4")
Process Tube	4.76 (3/16")

* EN12900 : T°Cond. 55.0°C / T°Evap. -25.0°C / T°Return gas temp.. 32.0°C
T°Subcooling. 0.0K

Certificates :



Note : Tecumseh reserves the right to change information contained in this document without notification.



Tecumseh

THG1365YGS	Tension GS : 220V 1~ 50 Hz / 60 Hz
-------------------	---

Les performances sont données dans les conditions EN12900 :	Gaz aspirés :	32.0 °C
Condition Dew	Sous refroidissement :	0.0 K
The performance data are in EN12900 conditions :	Return gas :	32.0 °C
Dew Condition	Subcooling :	0.0 K

50 Hz R134a								
N°TH241GS								
4 T condensation	5 T évaporation	(°C)	-35	-30	-25	-20	-15	-10
35	1 P frigorifique	(Watt)	94.0	134	178	230	297	385
	2 P absorbée	(W)	104	118	132	145	160	179
	3 I absorbée	(A)	1.18	1.21	1.23	1.26	1.29	1.34
40	1 P frigorifique	(Watt)	85.9	124	165	214	278	361
	2 P absorbée	(W)	104	120	134	149	166	186
	3 I absorbée	(A)	1.19	1.21	1.23	1.26	1.30	1.35
50	1 P frigorifique	(Watt)	66.1	100	136	179	235	309
	2 P absorbée	(W)	102	120	137	154	174	196
	3 I absorbée	(A)	1.19	1.21	1.24	1.27	1.32	1.38
60	1 P frigorifique	(Watt)		75.7	107	144	192	256
	2 P absorbée	(W)		117	137	157	179	205
	3 I absorbée	(A)		1.20	1.23	1.28	1.33	1.40

60 Hz R134a								
N°TH241GS								
4 T condensation	5 T évaporation	(°C)	-35	-30	-25	-20	-15	-10
35	1 P frigorifique	(Watt)	108	159	212	275	359	471
	2 P absorbée	(W)	101	121	138	157	179	209
	3 I absorbée	(A)	0.95	1.00	1.05	1.10	1.17	1.27
40	1 P frigorifique	(Watt)	96.6	142	191	252	332	440
	2 P absorbée	(W)	100	120	139	160	185	218
	3 I absorbée	(A)	0.95	0.99	1.04	1.11	1.19	1.29
50	1 P frigorifique	(Watt)	76.7	113	154	207	280	380
	2 P absorbée	(W)	98.5	119	139	163	193	232
	3 I absorbée	(A)	0.94	0.99	1.04	1.12	1.21	1.35
60	1 P frigorifique	(Watt)		87.2	120	166	230	320
	2 P absorbée	(W)		117	139	165	199	244
	3 I absorbée	(A)		0.99	1.04	1.12	1.23	1.38

1 = cooling capacity 2 = power input 3 = current 4 = condensing temperature 5 = evaporating temperature

Nota : Tecumseh se réserve le droit de modifier les informations contenues dans ce document sans préavis.

Note : Tecumseh reserves the right to change information contained in this document without notification.

© 2021 Tecumseh Products Company
All rights reserved