



Compressor
Voltage Code : T

TAG4573Z

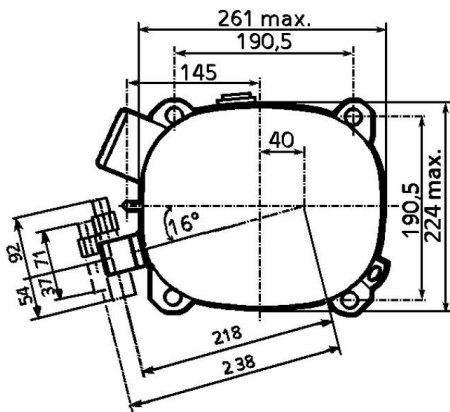
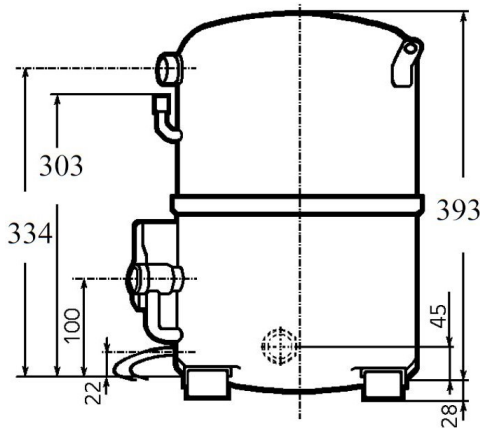
High Temp. Commercial (HP)

400V 3~ 50Hz / 440V 3~ 60 Hz

R452A / R404A / R449A

AGB4573ZTZ

| Conditions | Frequency | Nominal Cooling Capacity | | Sound Power ISO3745 / ISO 3743-1 |
|-----------------|---------------|--------------------------|---------------|-------------------------------------|
| | | Watts | BTU/h | |
| EN12900 / R452A | 50 Hz / 60 Hz | 15461 / 18595 | 52722 / 63408 | 81 dBA |
| EN12900 / R404A | 50 Hz / 60 Hz | 15385 / 18507 | 52463 / 63108 | 81 dBA |
| EN12900 / R449A | 50 Hz / 60 Hz | 15842 / 19053 | 54022 / 64971 | 81 dBA |



| | |
|--|--------------------------------|
| Displacement (cc) | 134.8 |
| Net Weight (Kg) | 48.0 |
| Oil Quantity (cc) | 1960.0 |
| Oil Type | Polyolester |
| Expansion Device | Capillary_Tube/Expansion_Valve |
| Cooling | Fan |
| Main Winding (Ohm) | 2.2 |
| Current | |
| RLA (A) | 11.4 13.2 |
| MCC (A) | 19 18.3 |
| LRA (A) | 56 61 |
| Electrical Equipment | TRI |
| Overload | Interne |
| Refrigerating connection for OD | |
| Suction Tube | 28.6 (1"1/8) |
| Discharge Tube | 15.9 (5/8") |
| Process Tube | 6.35 (1/4") |

* EN12900 : T°Cond. 50.0°C / T°Evap. 5.0°C / T°Return gas temp.. 20.0°C
T°Subcooling. 0.0K

Certificates :

Note : Tecumseh reserves the right to change information contained in this document without notification.



Tecumseh

| | |
|-----------------|---|
| TAG4573Z | Tension T : 400V 3~ 50Hz / 440V 3~ 60 Hz |
|-----------------|---|

| | | |
|--|------------------------|---------|
| Les performances sont données dans les conditions EN12900 : | Gaz aspirés : | 20.0 °C |
| Condition Dew | Sous refroidissement : | 0.0 K |
| The performance data are in EN12900 conditions : | Return gas : | 20.0 °C |
| Dew Condition | Subcooling : | 0.0 K |

© 2018 Tecumseh Products Company
All rights reserved

50 Hz R452A

N°2154

| 4 T condensation | 5 T évaporation | (°C) | -25 | -20 | -15 | -10 | -5 | 0 | 5 | 10 | 15 |
|--------------------|--------------------|--------|------|------|------|-------|-------|-------|-------|-------|-------|
| 30 | 1 P frigorifique | (Watt) | 5342 | 7166 | 9298 | 11811 | 14771 | 18235 | 22256 | 26880 | 32145 |
| | 2 P absorbée | (W) | 2831 | 3283 | 3730 | 4173 | 4614 | 5052 | 5491 | 5930 | 6371 |
| | 3 I absorbée | (A) | 5.38 | 5.99 | 6.60 | 7.23 | 7.87 | 8.53 | 9.22 | 9.94 | 10.7 |
| 40 | 1 P frigorifique | (Watt) | | 5799 | 7672 | 9867 | 12448 | 15474 | 18993 | 23046 | 27660 |
| | 2 P absorbée | (W) | | 3320 | 3861 | 4402 | 4946 | 5493 | 6044 | 6601 | 7165 |
| | 3 I absorbée | (A) | | 6.05 | 6.81 | 7.57 | 8.36 | 9.16 | 9.99 | 10.9 | 11.7 |
| 50 | 1 P frigorifique | (Watt) | | | 5922 | 7759 | 9927 | 12479 | 15461 | 18906 | 22833 |
| | 2 P absorbée | (W) | | | 3824 | 4468 | 5120 | 5779 | 6448 | 7127 | 7817 |
| | 3 I absorbée | (A) | | | 6.76 | 7.68 | 8.62 | 9.58 | 10.6 | 11.6 | 12.6 |
| 60 | 1 P frigorifique | (Watt) | | | | 5535 | 7248 | 9287 | 11690 | 14482 | 17671 |
| | 2 P absorbée | (W) | | | | 4318 | 5081 | 5857 | 6647 | 7452 | 8273 |
| | 3 I absorbée | (A) | | | | 7.48 | 8.59 | 9.71 | 10.9 | 12.0 | 13.2 |

60 Hz R452A

N°2154

| 4 T condensation | 5 T évaporation | (°C) | -25 | -20 | -15 | -10 | -5 | 0 | 5 | 10 | 15 |
|--------------------|--------------------|--------|------|------|-------|-------|-------|-------|-------|-------|-------|
| 30 | 1 P frigorifique | (Watt) | 6721 | 8889 | 11411 | 14368 | 17836 | 21882 | 26566 | 31941 | 38049 |
| | 2 P absorbée | (W) | 3667 | 4253 | 4836 | 5414 | 5987 | 6553 | 7112 | 7661 | 8201 |
| | 3 I absorbée | (A) | 5.97 | 6.81 | 7.62 | 8.42 | 9.20 | 9.97 | 10.7 | 11.5 | 12.3 |
| 40 | 1 P frigorifique | (Watt) | | 7329 | 9538 | 12102 | 15096 | 18587 | 22631 | 27276 | 32556 |
| | 2 P absorbée | (W) | | 4296 | 4981 | 5676 | 6380 | 7092 | 7811 | 8535 | 9264 |
| | 3 I absorbée | (A) | | 6.86 | 7.87 | 8.87 | 9.86 | 10.8 | 11.8 | 12.8 | 13.7 |
| 50 | 1 P frigorifique | (Watt) | | | 7596 | 9758 | 12270 | 15198 | 18595 | 22501 | 26940 |
| | 2 P absorbée | (W) | | | 4997 | 5789 | 6606 | 7444 | 8304 | 9183 | 10082 |
| | 3 I absorbée | (A) | | | 7.77 | 8.98 | 10.2 | 11.4 | 12.6 | 13.7 | 14.9 |
| 60 | 1 P frigorifique | (Watt) | | | | 7297 | 9316 | 11667 | 14399 | 17543 | 21110 |
| | 2 P absorbée | (W) | | | | 5772 | 6680 | 7626 | 8607 | 9623 | 10672 |
| | 3 I absorbée | (A) | | | | 8.67 | 10.1 | 11.5 | 12.9 | 14.3 | 15.7 |

1 = cooling capacity 2 = power input 3 = current 4 = condensing temperature 5 = evaporating temperature

Nota : Tecumseh se réserve le droit de modifier les informations contenues dans ce document sans préavis.

Note : Tecumseh reserves the right to change information contained in this document without notification.



Tecumseh

| | |
|-----------------|---|
| TAG4573Z | Tension T : 400V 3~ 50Hz / 440V 3~ 60 Hz |
|-----------------|---|

| | | |
|--|------------------------|---------|
| Les performances sont données dans les conditions EN12900 : | Gaz aspirés : | 20.0 °C |
| Condition Dew | Sous refroidissement : | 0.0 K |
| The performance data are in EN12900 conditions : | Return gas : | 20.0 °C |
| Dew Condition | Subcooling : | 0.0 K |

| 50 Hz R404A | | | | | | | | | | | |
|--------------------|--------------------|--------|------------|------------|------------|------------|-----------|----------|----------|-----------|------------------|
| | | | | | | | | | | | N°227LU-T |
| 4 T condensation | 5 T évaporation | (°C) | -25 | -20 | -15 | -10 | -5 | 0 | 5 | 10 | 15 |
| 30 | 1 P frigorifique | (Watt) | 5894 | 7716 | 9878 | 12427 | 15413 | 18882 | 22883 | 27462 | 32667 |
| | 2 P absorbée | (W) | 3020 | 3477 | 3935 | 4393 | 4850 | 5306 | 5759 | 6207 | 6651 |
| | 3 I absorbée | (A) | 5.74 | 6.35 | 6.97 | 7.61 | 8.28 | 8.96 | 9.67 | 10.4 | 11.2 |
| 40 | 1 P frigorifique | (Watt) | 4516 | 6163 | 8071 | 10288 | 12861 | 15837 | 19265 | 23192 | 27667 |
| | 2 P absorbée | (W) | 3027 | 3563 | 4104 | 4650 | 5200 | 5752 | 6306 | 6861 | 7415 |
| | 3 I absorbée | (A) | 5.77 | 6.49 | 7.24 | 8.00 | 8.79 | 9.60 | 10.4 | 11.3 | 12.2 |
| 50 | 1 P frigorifique | (Watt) | | 4539 | 6155 | 8000 | 10122 | 12567 | 15385 | 18622 | 22327 |
| | 2 P absorbée | (W) | | 3512 | 4134 | 4766 | 5406 | 6053 | 6706 | 7364 | 8027 |
| | 3 I absorbée | (A) | | 6.44 | 7.31 | 8.19 | 9.10 | 10.0 | 11.0 | 12.0 | 13.0 |
| 60 | 1 P frigorifique | (Watt) | | | 4232 | 5667 | 7299 | 9175 | 11344 | 13853 | 16750 |
| | 2 P absorbée | (W) | | | 4010 | 4725 | 5453 | 6193 | 6943 | 7703 | 8471 |
| | 3 I absorbée | (A) | | | 7.18 | 8.19 | 9.22 | 10.3 | 11.3 | 12.4 | 13.6 |

| 60 Hz R404A | | | | | | | | | | | |
|--------------------|--------------------|--------|------------|------------|------------|------------|-----------|----------|----------|-----------|------------------|
| | | | | | | | | | | | N°227LU-T |
| 4 T condensation | 5 T évaporation | (°C) | -25 | -20 | -15 | -10 | -5 | 0 | 5 | 10 | 15 |
| 30 | 1 P frigorifique | (Watt) | 7410 | 9574 | 12126 | 15120 | 18612 | 22657 | 27312 | 32630 | 38669 |
| | 2 P absorbée | (W) | 3912 | 4504 | 5101 | 5699 | 6294 | 6882 | 7459 | 8020 | 8561 |
| | 3 I absorbée | (A) | 6.37 | 7.21 | 8.04 | 8.86 | 9.67 | 10.5 | 11.3 | 12.0 | 12.8 |
| 40 | 1 P frigorifique | (Watt) | 5835 | 7793 | 10035 | 12617 | 15594 | 19022 | 22956 | 27451 | 32563 |
| | 2 P absorbée | (W) | 3946 | 4611 | 5295 | 5996 | 6707 | 7427 | 8149 | 8871 | 9587 |
| | 3 I absorbée | (A) | 6.34 | 7.36 | 8.37 | 9.37 | 10.4 | 11.3 | 12.3 | 13.3 | 14.2 |
| 50 | 1 P frigorifique | (Watt) | | 5981 | 7901 | 10059 | 12508 | 15306 | 18507 | 22166 | 26339 |
| | 2 P absorbée | (W) | | 4659 | 5402 | 6176 | 6975 | 7797 | 8636 | 9489 | 10352 |
| | 3 I absorbée | (A) | | 7.21 | 8.40 | 9.58 | 10.8 | 11.9 | 13.1 | 14.2 | 15.3 |
| 60 | 1 P frigorifique | (Watt) | | | 5751 | 7471 | 9380 | 11534 | 13989 | 16800 | 20022 |
| | 2 P absorbée | (W) | | | 5493 | 6310 | 7169 | 8064 | 8991 | 9947 | 10927 |
| | 3 I absorbée | (A) | | | 8.13 | 9.49 | 10.8 | 12.2 | 13.5 | 14.8 | 16.1 |

1 = cooling capacity 2 = power input 3 = current 4 = condensing temperature 5 = evaporating temperature

Nota : Tecumseh se réserve le droit de modifier les informations contenues dans ce document sans préavis.

Note : Tecumseh reserves the right to change information contained in this document without notification.

© 2018 Tecumseh Products Company
All rights reserved



Tecumseh

| | |
|-----------------|---|
| TAG4573Z | Tension T : 400V 3~ 50Hz / 440V 3~ 60 Hz |
|-----------------|---|

| | | |
|--|------------------------|---------|
| Les performances sont données dans les conditions EN12900 : | Gaz aspirés : | 20.0 °C |
| Condition Dew | Sous refroidissement : | 0.0 K |
| The performance data are in EN12900 conditions : | Return gas : | 20.0 °C |
| Dew Condition | Subcooling : | 0.0 K |

© 2018 Tecumseh Products Company
All rights reserved

50 Hz R449A (*)

N°2270

| 4 T condensation | 5 T évaporation | (°C) | -25 | -20 | -15 | -10 | -5 | 0 | 5 | 10 | 15 |
|--------------------|--------------------|--------|------|------|------|-------|-------|-------|-------|-------|-------|
| 30 | 1 P frigorifique | (Watt) | 4499 | 6299 | 8445 | 11018 | 14096 | 17751 | 22048 | 27049 | 32808 |
| | 2 P absorbée | (W) | 2561 | 2912 | 3302 | 3718 | 4147 | 4578 | 4999 | 5396 | 5759 |
| | 3 I absorbée | (A) | 4.87 | 5.32 | 5.85 | 6.44 | 7.07 | 7.73 | 8.40 | 9.04 | 9.66 |
| 40 | 1 P frigorifique | (Watt) | | 5145 | 7030 | 9284 | 11984 | 15201 | 18997 | 23430 | 28546 |
| | 2 P absorbée | (W) | | 3074 | 3496 | 3966 | 4472 | 5002 | 5544 | 6085 | 6613 |
| | 3 I absorbée | (A) | | 5.60 | 6.17 | 6.82 | 7.56 | 8.34 | 9.17 | 10.0 | 10.8 |
| 50 | 1 P frigorifique | (Watt) | | | 5547 | 7472 | 9785 | 12555 | 15842 | 19698 | 24162 |
| | 2 P absorbée | (W) | | | 3633 | 4131 | 4687 | 5290 | 5926 | 6584 | 7251 |
| | 3 I absorbée | (A) | | | 6.42 | 7.10 | 7.89 | 8.76 | 9.70 | 10.7 | 11.7 |
| 60 | 1 P frigorifique | (Watt) | | | | 5631 | 7548 | 9861 | 12629 | 15897 | 19696 |
| | 2 P absorbée | (W) | | | | 4234 | 4813 | 5462 | 6166 | 6914 | 7694 |
| | 3 I absorbée | (A) | | | | 7.33 | 8.14 | 9.06 | 10.1 | 11.2 | 12.3 |

60 Hz R449A (*)

N°2270

| 4 T condensation | 5 T évaporation | (°C) | -25 | -20 | -15 | -10 | -5 | 0 | 5 | 10 | 15 |
|--------------------|--------------------|--------|------|------|-------|-------|-------|-------|-------|-------|-------|
| 30 | 1 P frigorifique | (Watt) | 5662 | 7814 | 10363 | 13403 | 17021 | 21301 | 26318 | 32141 | 38834 |
| | 2 P absorbée | (W) | 3318 | 3773 | 4281 | 4823 | 5382 | 5938 | 6474 | 6972 | 7412 |
| | 3 I absorbée | (A) | 5.40 | 6.04 | 6.75 | 7.50 | 8.27 | 9.03 | 9.77 | 10.5 | 11.1 |
| 40 | 1 P frigorifique | (Watt) | | 6501 | 8740 | 11387 | 14533 | 18258 | 22635 | 27731 | 33599 |
| | 2 P absorbée | (W) | | 3978 | 4510 | 5113 | 5768 | 6458 | 7164 | 7867 | 8550 |
| | 3 I absorbée | (A) | | 6.35 | 7.13 | 7.99 | 8.91 | 9.86 | 10.8 | 11.8 | 12.7 |
| 50 | 1 P frigorifique | (Watt) | | | 7115 | 9398 | 12096 | 15291 | 19053 | 23443 | 28509 |
| | 2 P absorbée | (W) | | | 4747 | 5353 | 6048 | 6813 | 7631 | 8483 | 9351 |
| | 3 I absorbée | (A) | | | 7.38 | 8.31 | 9.32 | 10.4 | 11.5 | 12.7 | 13.8 |
| 60 | 1 P frigorifique | (Watt) | | | | 7419 | 9696 | 12384 | 15554 | 19258 | 23536 |
| | 2 P absorbée | (W) | | | | 5650 | 6327 | 7111 | 7984 | 8928 | 9923 |
| | 3 I absorbée | (A) | | | | 8.50 | 9.57 | 10.7 | 12.0 | 13.3 | 14.6 |

1 = cooling capacity 2 = power input 3 = current 4 = condensing temperature 5 = evaporating temperature

(*) Veuillez vous référer strictement aux Recommandations d'Utilisation et Bulletins Marketing Tecumseh du fait de la température de reflux élevée pour les applications LBP.

(*) Due to very high discharge temperature especially on LBP conditions, please strictly refer to Tecumseh Guidelines & Marketing Bulletin when using this refrigerant.

Nota : Tecumseh se réserve le droit de modifier les informations contenues dans ce document sans préavis.

Note : Tecumseh reserves the right to change information contained in this document without notification.